

RENOVATION OF
THE SS3 BLOCKS
AT
FEDERAL GOVERNMENT COLLEGE ENUGU
BY
ASSOCIATION OF FEDERAL GOVERNMENT COLLEGE
ENUGU ALUMNI AMERICA, INC .
(-AFGCEAA, INC.)



LOCATION OF THE SS3 BLOCK

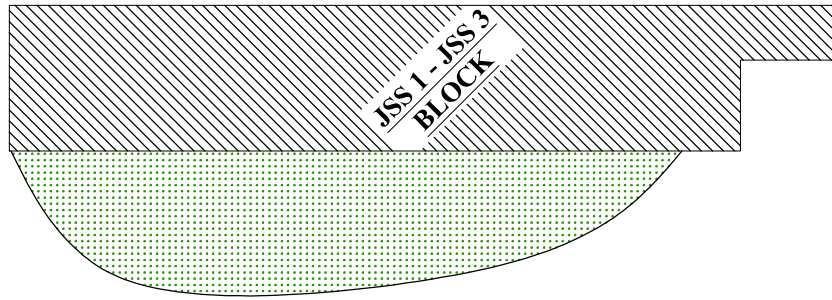


NOTES:
 --DO NOT scale dimensions off this dwg. Any discrepancies MUST be referred to the architect for proper clarification.
 --The client undertakes to execute this project in TOTAL conformity with these dwgs and specifications.
 --The architect shall not accept any responsibilities for any failures due to unsupervised site operations.

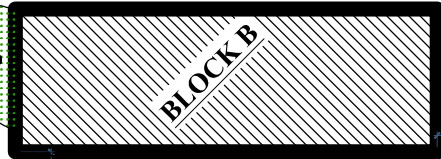
RENOVATION OF THE SS3 BLOCKS (2015)
 FOR
 ASSOCIATION OF FEDERAL GOVERNMENT
 COLLEGE ENUGU ALUMNI AMERICAS, INC .
 -AFGCEAA
 AT
 FEDERAL GOVERNMENT COLLEGE
 ENUGU, STATE.

3 DIMENSIONAL VIEW

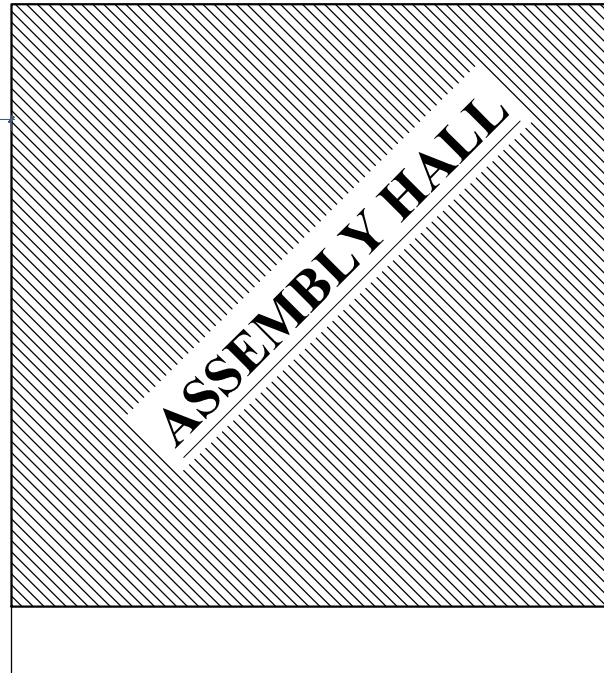
Project number	AFGCEAA -- 2	001
Date	NOVEMBER 2015	
Drawn by	PROJECT IMPLEMENTATION COMMITTEE(PIC)	Scale 1 : 100



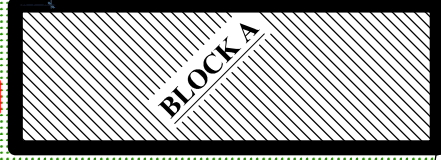
EXISTING SEPTIC TANK



BLOCK B



ASSEMBLY HALL



BLOCK A

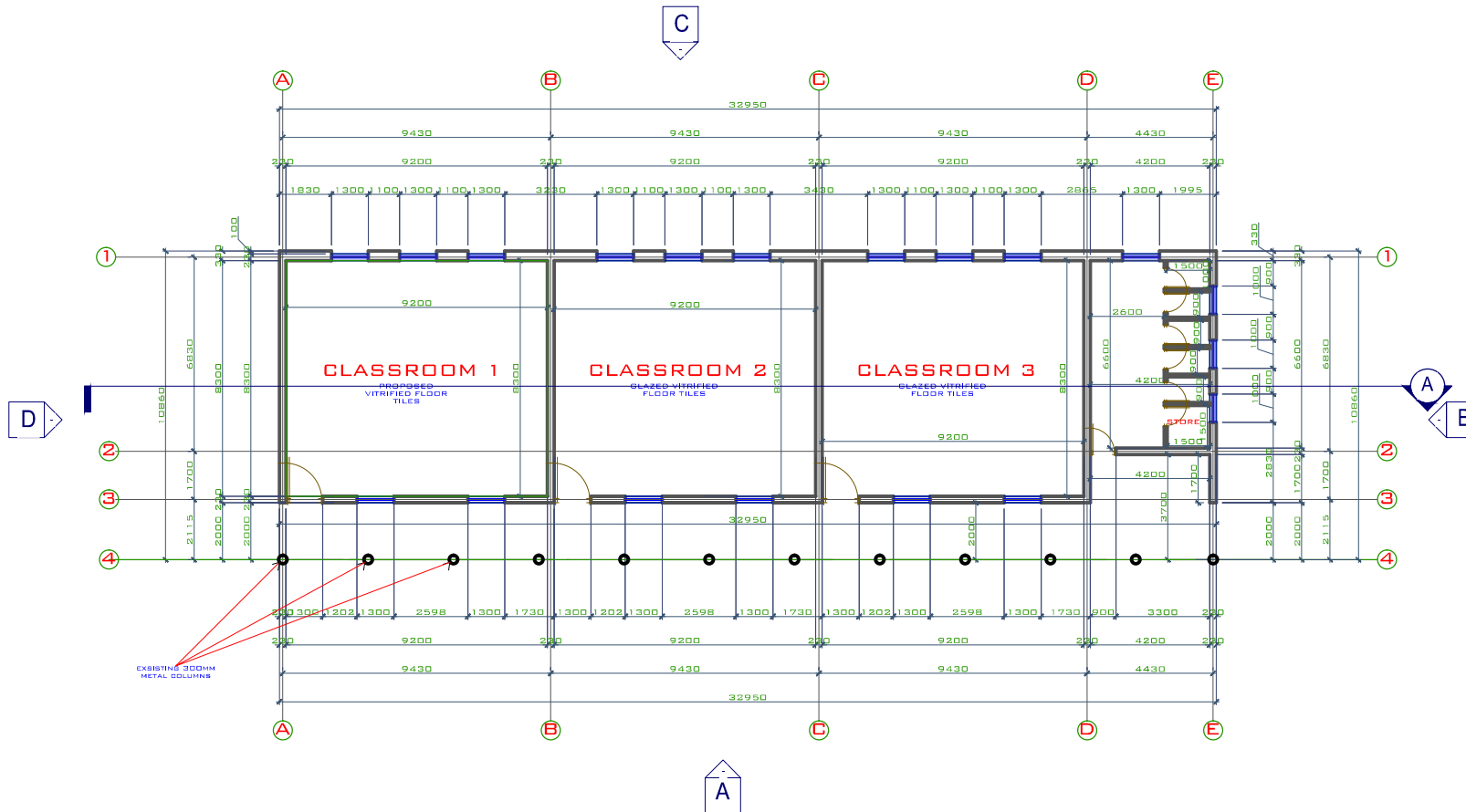
EXISTING STAND FOR OVER HEAD TANK



NOTES:
 ---DO NOT scale dimensions off this dwg. Any discrepancies MUST be referred to the architect for proper clarification.
 ---The client undertakes to execute this project in TOTAL conformity with these dwgs and specifications.
 ---The architect shall not accept any responsibilities for any failures due to unsupervised site operations.

RENOVATION OF THE SS3 BLOCKS (2015)
 FOR
 ASSOCIATION OF FEDERAL GOVERNMENT COLLEGE ENUGU ALUMNI AMERICAS, INC .
 -AFGCEAA
 AT
 FEDERAL GOVERNMENT COLLEGE ENUGU, STATE.

SITE PLAN		
Project number	AFGCEAA -- 2	002
Date	NOVEMBER 2015	
Drawn by	PROJECT IMPLEMENTATION COMMITTEE(PIC)	Scale 1 : 100

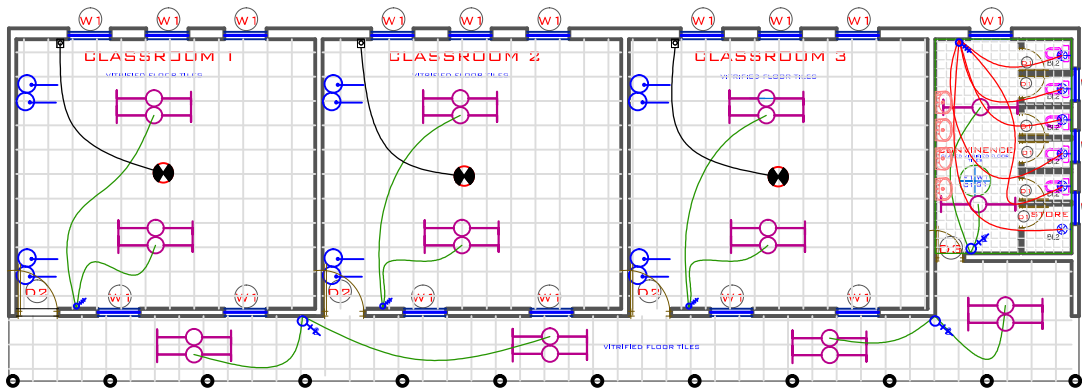


NOTES:
 --DO NOT scale dimensions off this dwg. Any discrepancies MUST be referred to the architect for proper clarification.
 --The client undertakes to execute this project in TOTAL conformity with these dwgs and specifications.
 --The architect shall not accept any responsibilities for any failures due to unsupervised site operations.

RENOVATION OF THE SS3 BLOCKS (2015)
 FOR
 ASSOCIATION OF FEDERAL GOVERNMENT
 COLLEGE ENUGU ALUMNI AMERICAS, INC .
 -AFGCEAA
 AT
 FEDERAL GOVERNMENT COLLEGE
 ENUGU, STATE.

GROUND FLOOR PLAN
 (SHOWING DIMENSIONS)

Project number	AFGCEAA - - 2	003
Date	NOVEMBER 2015	
Drawn by	PROJECT IMPLEMENTATION COMMITTEE(PIC)	Scale 1 : 100



LEGEND

SYMBOL	DESCRIPTION
	WATER CLOSET SUITE
	1X 36w 5 bare batten Lamina for T8 Lamps, type, CROMPACK CP 4 S. Complete with power factor correction element and switch starter controller. 2X 36w 5 bare batten Lamina for T8 Lamps, type, CROMPACK CP 4 S. Complete with power factor correction element and switch starter controller.
	13A TWIN SWITCH SOCKET OUTLET
	10A 2 GANG 1 WAY SWITCH (MK)
	10A 3 GANG 1 WAY SWITCH (MK)
	1 X 60W A60 WALL LUMINARIES
	CEILING FAN. MK
	CEILING FAN REGULATOR. MK



NOTES.
 ---DO NOT scale dimensions off this dwg. Any discrepancies MUST be referred to the architect for proper clarification.

---The client undertakes to execute this project in TOTAL conformity with these dwgs and specifications.

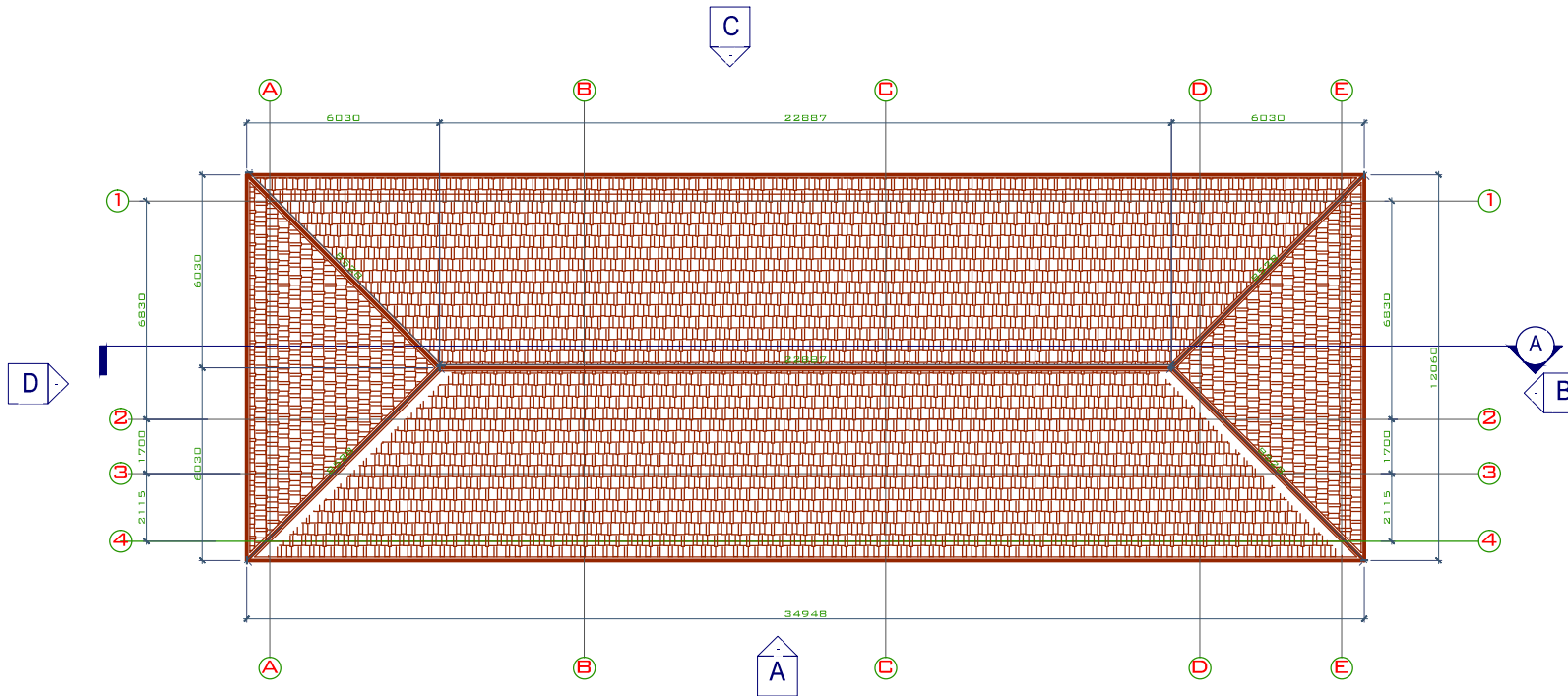
---The architect shall not accept any responsibilities for any failures due to unsupervised site operations.

RENOVATION OF THE SS3 BLOCKS (2015)
 FOR
 ASSOCIATION OF FEDERAL GOVERNMENT
 COLLEGE ENUGU ALUMNI AMERICAS, INC .
 -AFGCEAA
 AT
 FEDERAL GOVERNMENT COLLEGE
 ENUGU, STATE.

GROUND FLOOR PLAN

(SHOWING ANOTATIONS)

Project number	AFGCEAA -- 2	004
Date	NOVEMBER 2015	
Drawn by	PROJECT IMPLEMENTATION COMMITTEE(PIC)	
Scale		1 : 100



NOTES.
 ---DO NOT scale dimensions off this dwg. Any discrepancies MUST be referred to the architect for proper clarification.
 ---The client undertakes to execute this project in TOTAL conformity with these dwgs and specifications.
 ---The architect shall not accept any responsibilities for any failures due to unsupervised site operations.

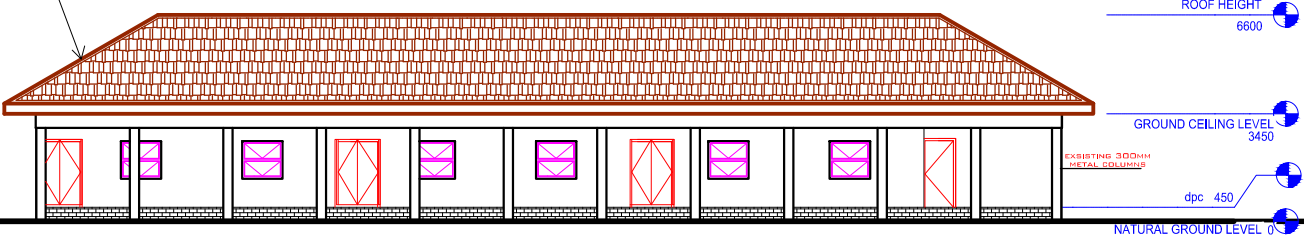
RENOVATION OF THE SS3 BLOCKS (2015)
 FOR
 ASSOCIATION OF FEDERAL GOVERNMENT
 COLLEGE ENUGU ALUMNI AMERICAS, INC .
 -AFGCEAA
 AT
 FEDERAL GOVERNMENT COLLEGE
 ENUGU, STATE.

ROOF PLAN

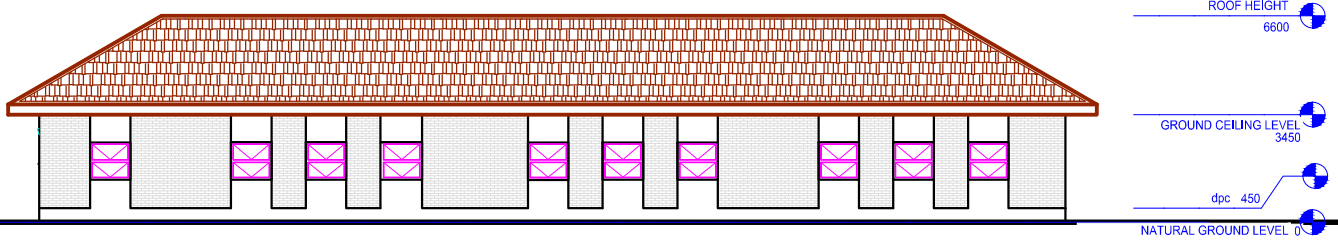
Project number	AFGCEAA -- 2	005
Date	NOVEMBER 2015	
Drawn by	PROJECT IMPLEMENTATION COMMITTEE(PIC)	Scale 1:100

FRONT
ELEVATIONS

EXISTING ROOF SHOULD BE
REMOVED AND REPLACED WITH
PROPOSED ROOF



BACK
ELEVATIONS





NOTES.
 --DO NOT scale dimensions off this dwg. Any discrepancies MUST be referred to the architect for proper clarification.
 --The client undertakes to execute this project in TOTAL conformity with these dwgs and specifications.
 --The architect shall not accept any responsibilities for any failures due to unsupervised site operations.

RENOVATION OF THE SS3 BLOCKS (2015)
 FOR
 ASSOCIATION OF FEDERAL GOVERNMENT
 COLLEGE ENUGU ALUMNI AMERICAS, INC .
 -AFGCEAA
 AT
 FEDERAL GOVERNMENT COLLEGE
 ENUGU, STATE.




ELEVATIONS

Project number	AFGCEAA - - 2	006
Date	NOVEMBER 2015	
Drawn by	PROJECT IMPLEMENTATION COMMITTEE(PIC)	Scale 1 : 100

WINDOW AND BURGLARY PROOF SCHEDULE

			
C	W1	D	W2
16nos		3nos	
1300mm x 1200mm powdered coated aluminum framed window with 2nos projecting panels		1000mm x 700mm powdered coated aluminum framed window with 2nos projecting panels	
burglary proof made by 20mm x 20mm metal rod		burglary proof made by 20mm x 20mm metal rod	

DOOR SCHEDULE

					
A	D1	B	D2	B	D3
6nos		1nos		6nos	
750mm x 2100mm single swing single action wood paneled door in wooden frames completed with cylindrical lock sets		1300mm x 2100mm single swing single action METAL paneled door in METAL frames completed with cylindrical lock sets		900mm x 2100mm single swing single action METAL paneled door in METAL frames completed with cylindrical lock sets	
WOOD		METAL		METAL	



NOTES.

---DO NOT scale dimensions off this dwg. Any discrepancies MUST be referred to the architect for proper clarification.

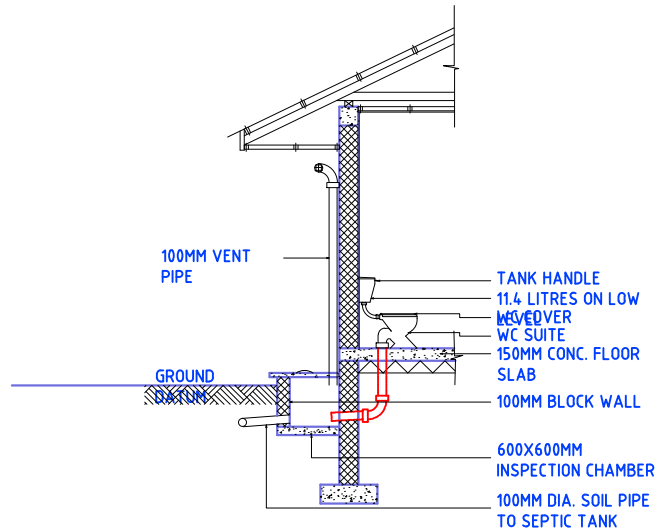
---The client undertakes to execute this project in TOTAL conformity with these dwgs and specifications.

---The architect shall not accept any responsibilities for any failures due to unsupervised site operations.

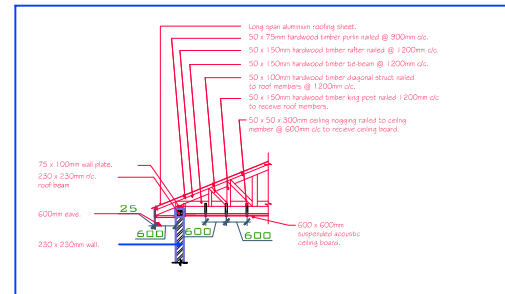
RENOVATION OF THE SS3 BLOCKS (2015)
FOR
 ASSOCIATION OF FEDERAL GOVERNMENT
 COLLEGE ENUGU ALUMNI AMERICAS, INC .
 -AFGCEAA
AT
 FEDERAL GOVERNMENT COLLEGE
 ENUGU, STATE.

SCHEDULES

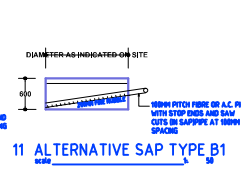
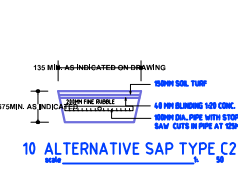
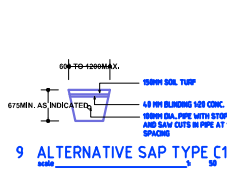
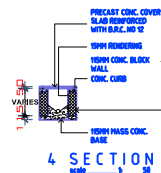
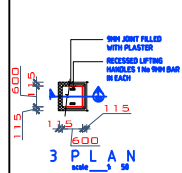
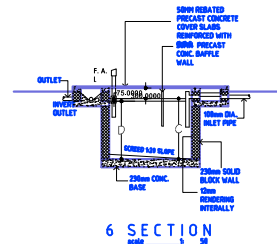
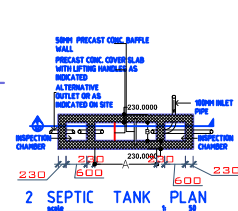
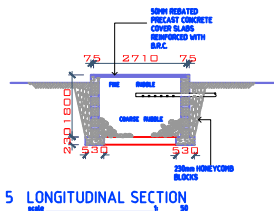
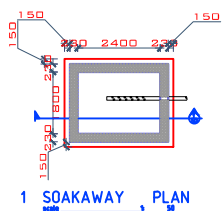
Project number	AFGCEAA -- 2	008
Date	NOVEMBER 2015	
Drawn by	PROJECT IMPLEMENTATION COMMITTEE(PIC)	Scale 1 : 100



7 WC WALL SECTION B
scale 1: 50



TYPICAL DETAIL OF A TIMBER ROOF



TANK TYPE	NO. OF USERS	CAPACITY OF TANK PER USER CUBIC METRE	TOTAL CUBIC METRE	LENGTH (MM)			BREATH (MM)			INLET DEPTH (MM)			OUTLET DEPTH (MM)			DIST. TO BAFFLE (MM)	AVERAGE DEPTH (MM)
				A	B	C	D	E	F	G	H	I	J				
A	10	0.192	1,192.0	2400	600	1275	1200	900	1800								
B	15	0.098	1,470	2775	825	1275	1200	1125	1800								
C	20	0.084	1,680	3000	1050	1350	1275	1200	1800								
D	50	0.07	3,500	3600	1200	1575	1600	1500	1800								
E	100	0.07	7,000	4,800	1950	1650	1575	2100	1800								
F	200	0.07	14,000	6000	2450	1875	1800	2700	1800								

12 SCHEDULE OF SEPTIC TANK SIZES



NOTES:
---DO NOT scale dimensions off this dwg. Any discrepancies MUST be referred to the architect for proper clarification.

---The client undertakes to execute this project in TOTAL conformity with these dwgs and specifications.

---The architect shall not accept any responsibilities for any failures due to unsupervised site operations.

RENOVATION OF THE SS3 BLOCKS (2015)
FOR
ASSOCIATION OF FEDERAL GOVERNMENT
COLLEGE ENUGU ALUMNI AMERICAS, INC.
-AFGCEAA
AT
FEDERAL GOVERNMENT COLLEGE
ENUGU, STATE.

PLUMBING DETAILS

Project number	AFGCEAA -- 2	009
Date	NOVEMBER 2015	
Drawn by		
PROJECT IMPLEMENTATION COMMITTEE (PIC)		Scale 1 : 100